

CORDLESS FRESH AIR HEATER



Quick Start Guide

SAFETY NOTE: Make sure heater is set up properly before starting up, exhaust pointed out side and tent wall secured.

SAFETY NOTE: Heater can not be shut down for about 14 minuets once you have started it.

SAFETY NOTE: This unit is equipped with a carbon monoxide detector. Make sure it's turned on and charged daily.

For Heat/Startup:

1. Press heat button once, Start up cycle will begin. (you should hear the fan give a burst of air)
2. Yellow LED will come on, fan will start up. Starting up heating cycle takes 9 minuets, heater will automatically go all the way up to its maximum temperature, **heating up cycle takes 9 minuets** until you can adjust the temperate or turn the unit off. **You must wait for the cycle to finish.**

Note: You can not shut down heater while starting up. **You must wait 9 minuets for the heat up cycle to finish.**

3. Once heater has finished its start up cycle you can adjust the temperature as needed.

Shutting Down/Turning heater off:

1. **Takes 5 minuets**, press heat button once, LED starts flashing. Once shutting down mode has started you can not stop it.

SPECIAL NOTES OF INTEREST:

At full battery charge this heater can run on its own power at maximum for approximately 24hrs. It can run much longer if it's run lower than maximum.

This heater will go into shut down mode automatically if the voltage gets down to approximately 11.5 Volts. (low battery)

Fuel: **Only use the provided diesel fuel jerry can.** This will avoid diesel spills that can get into the heaters fresh air intake, making your heated air smell like diesel. This heater **only runs on diesel fuel** to run. It will automatically shut down should it run out of diesel fuel.

Keep diesel tank full.

control panel

The following are located on the front of the panel:

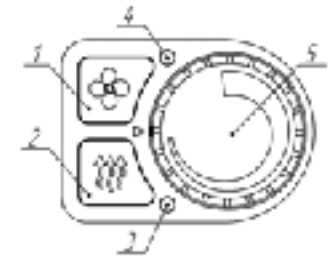
- 1 – Ventilation mode on/off button;
- 2 – Heater on/off button;
- 3 – Operation LED display;
- 4 – Ventilation mode LED display;
- 5 – Potentiometer knob.

The LED in Pos. 3 indicates the heater status:

- yellow light - heating mode;
- fast blinking yellow - during purging;
- slowly blinking red - in case of malfunction;
- off - heater is not operational.

The LED in Pos. 4 indicates the ventilation mode status:

- green light - interior sensor is not connected and heater operates in ventilation mode;
- green blink - ventilation mode off;
- yellow light - the interior sensor is connected and the heater operates in heating mode with ventilation function;
- off - heater is not operational, with ventilation mode off.

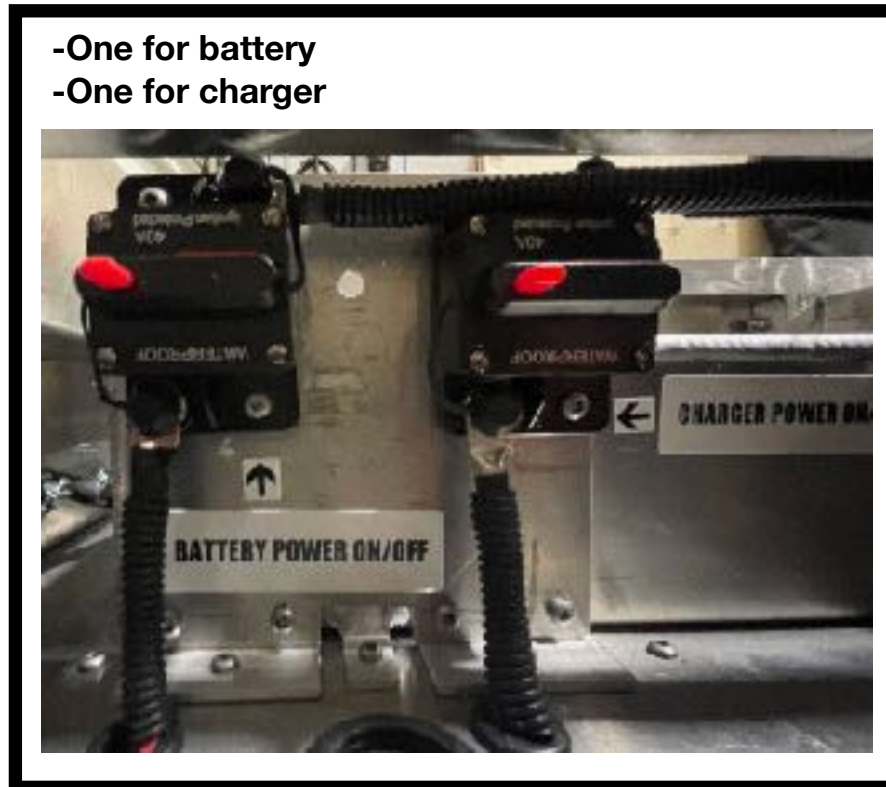


****Running out of fuel**:** This heater will need to be primed should it run out of fuel. (may need to go through two to three start up cycles in order to start again)

This heater is equipped with emergency power cut off switches. Under normal circumstances there is no need to turn off the power. Power should be left on at all times. **Only in an emergency should the master breakers (master power switches).**³

Master Breakers

- One for battery
- One for charger



Battery Monitor

Interface description

Present capacity → 84Ah ▾

Dynamic indication →

Present voltage → 13.2V-10.3A

Charge-discharge indicator ▾

Capacity percentage → 85%

Remaining time → 08:44

Present power → 136W

Present current →

USB Charger

Fast Car Charger

- QC 18W
- PD 45W
- Button Switch
- Easy to Use
- LED Voltmeter